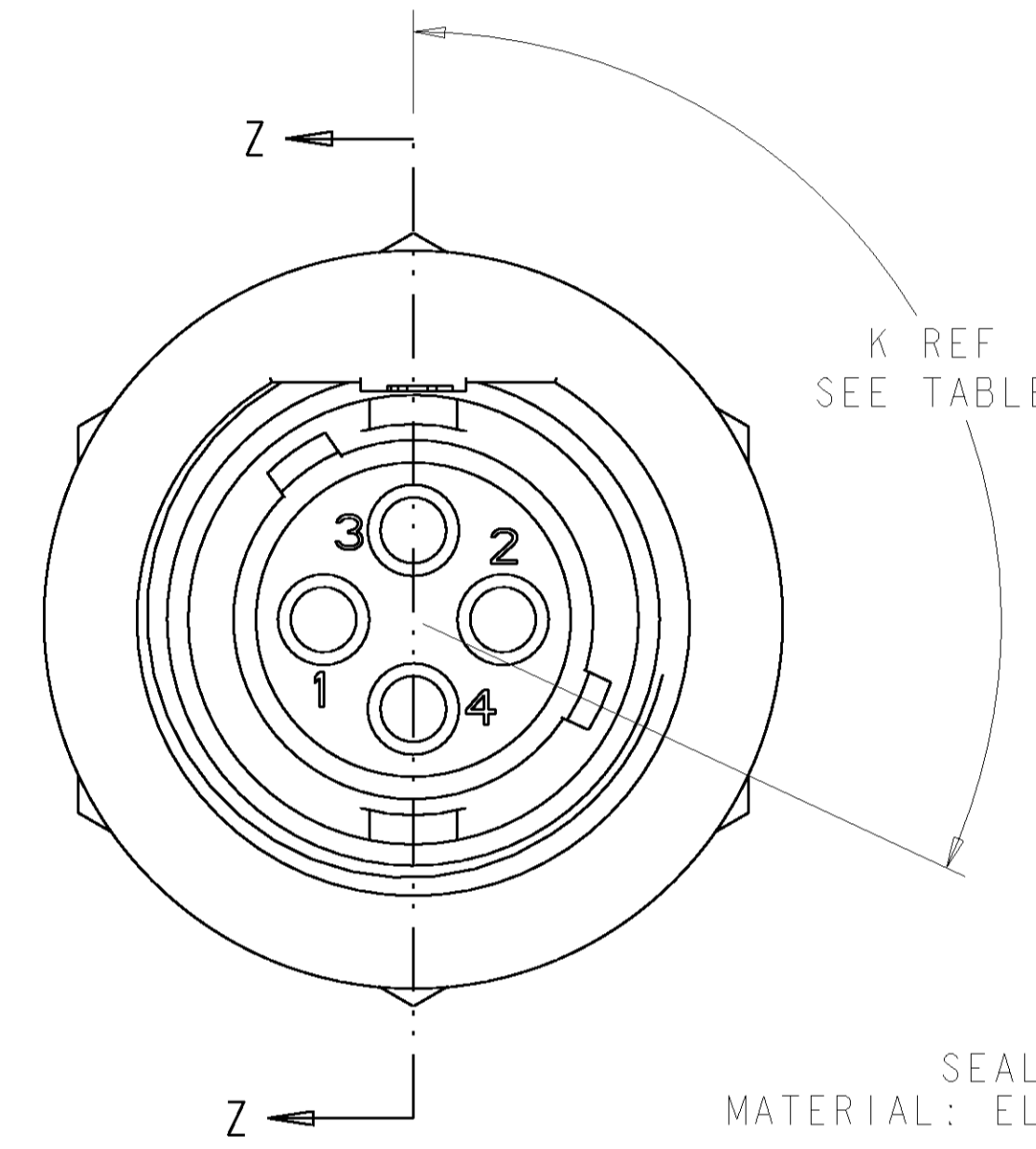
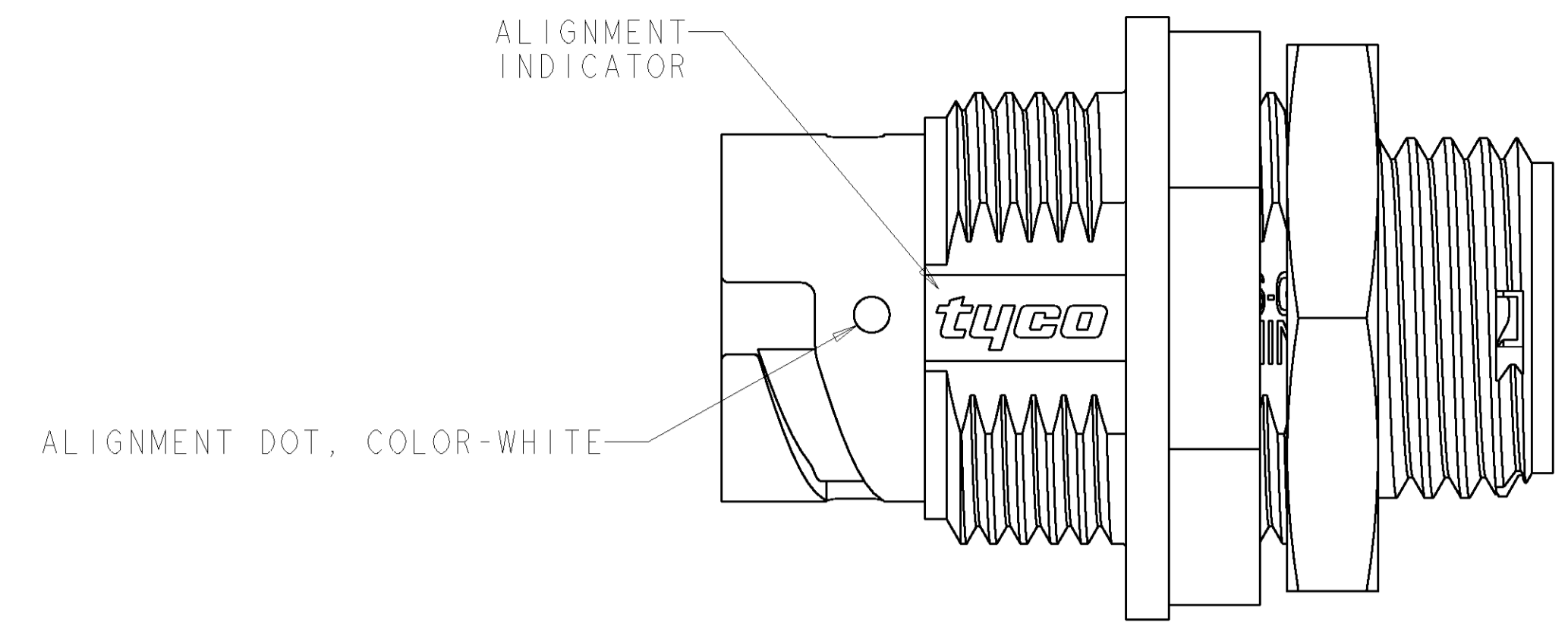
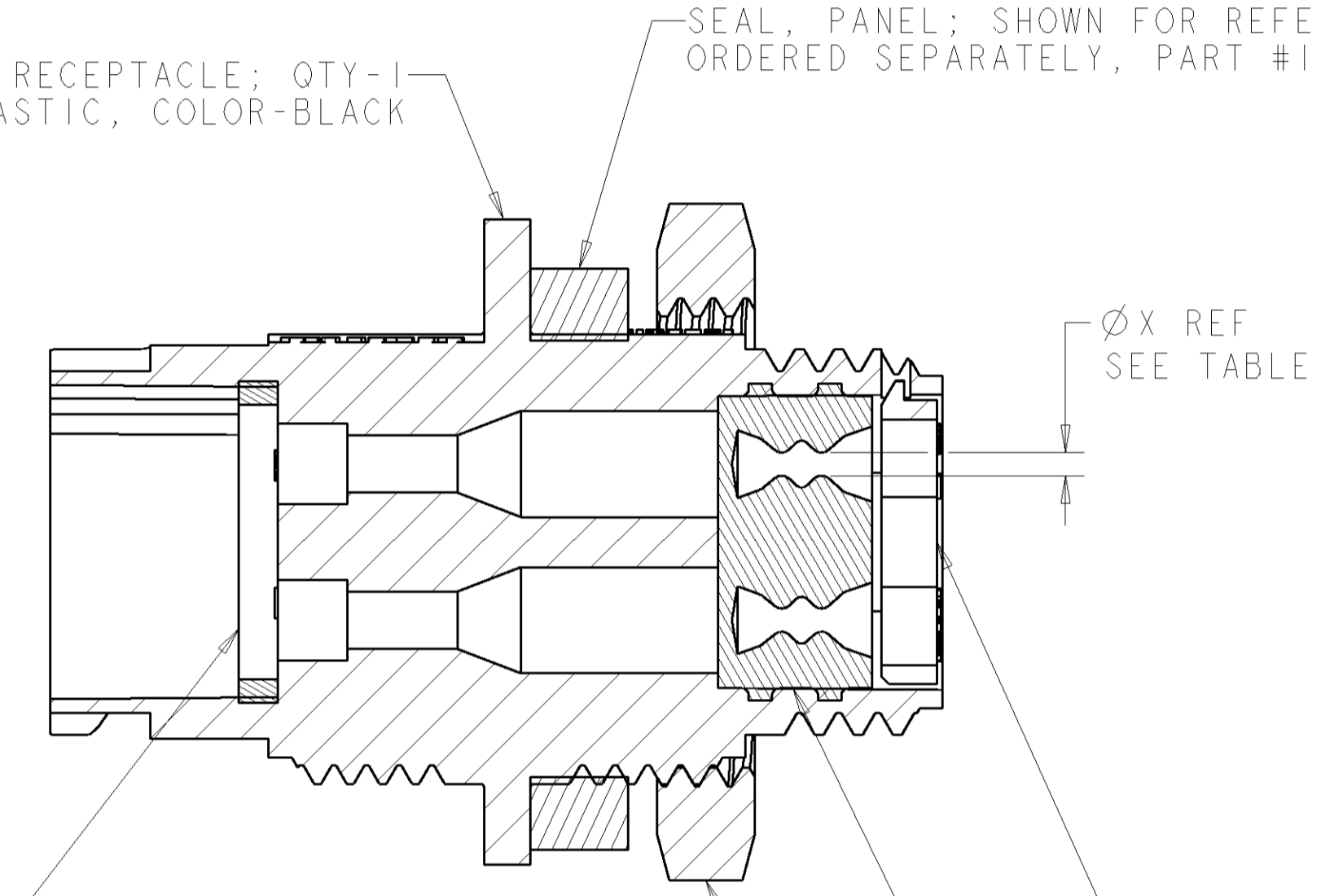


LOC		DIST		REVISIONS			
FT	0	P	LTR	DESCRIPTION	DATE	DWN	APVD
		A		RELEASED EC 0638-0362-03	12JUN2003	SW	HW
		B		REVISED EC 0638-0390-04	20MAY2004	SW	HW



HOUSING, RECEPTACLE; QTY-1  
 MATERIAL: THERMOPLASTIC, COLOR-BLACK

SEAL, PANEL; SHOWN FOR REFERENCE ONLY, TO BE ORDERED SEPARATELY, PART #1445420-01



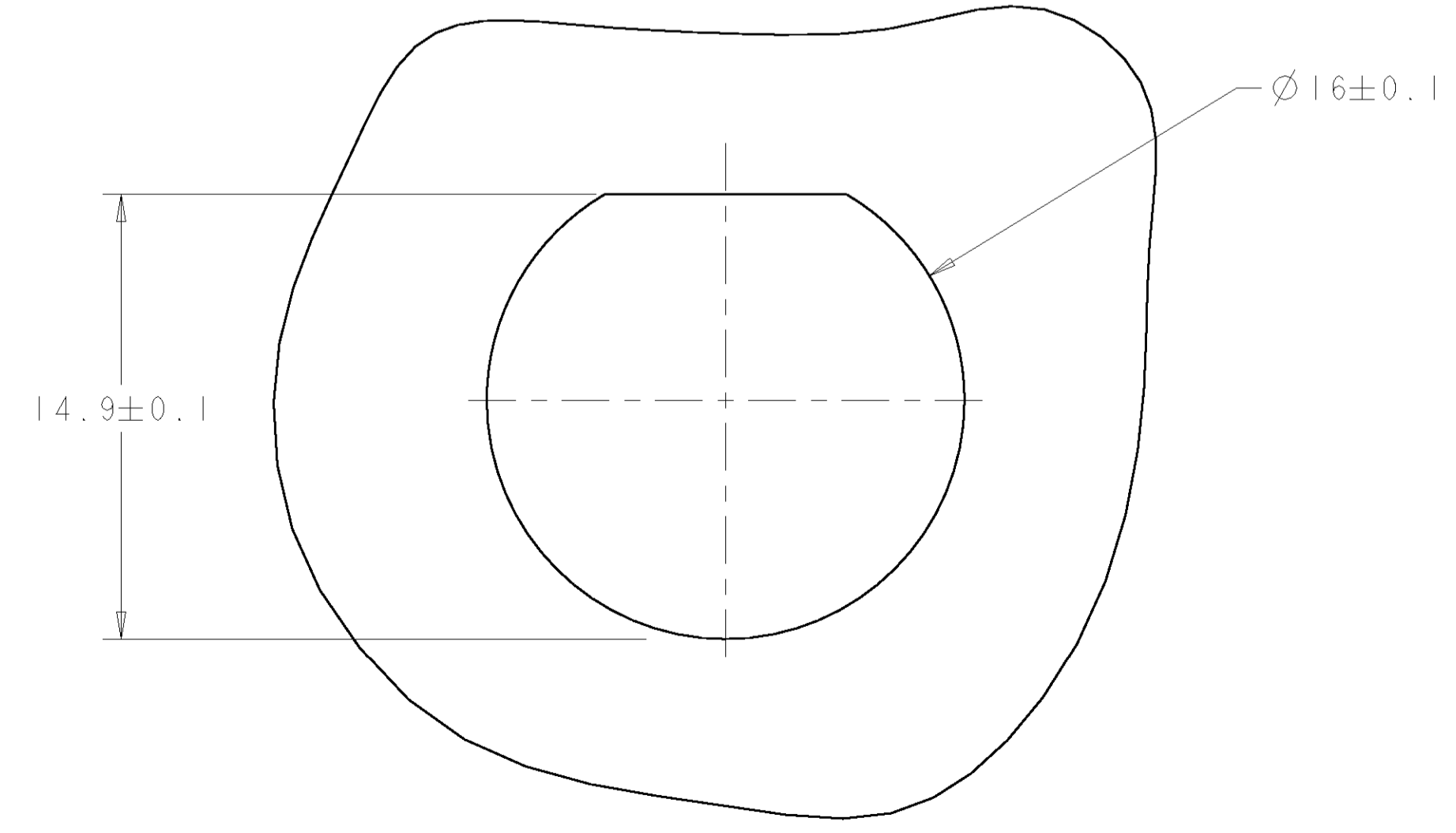
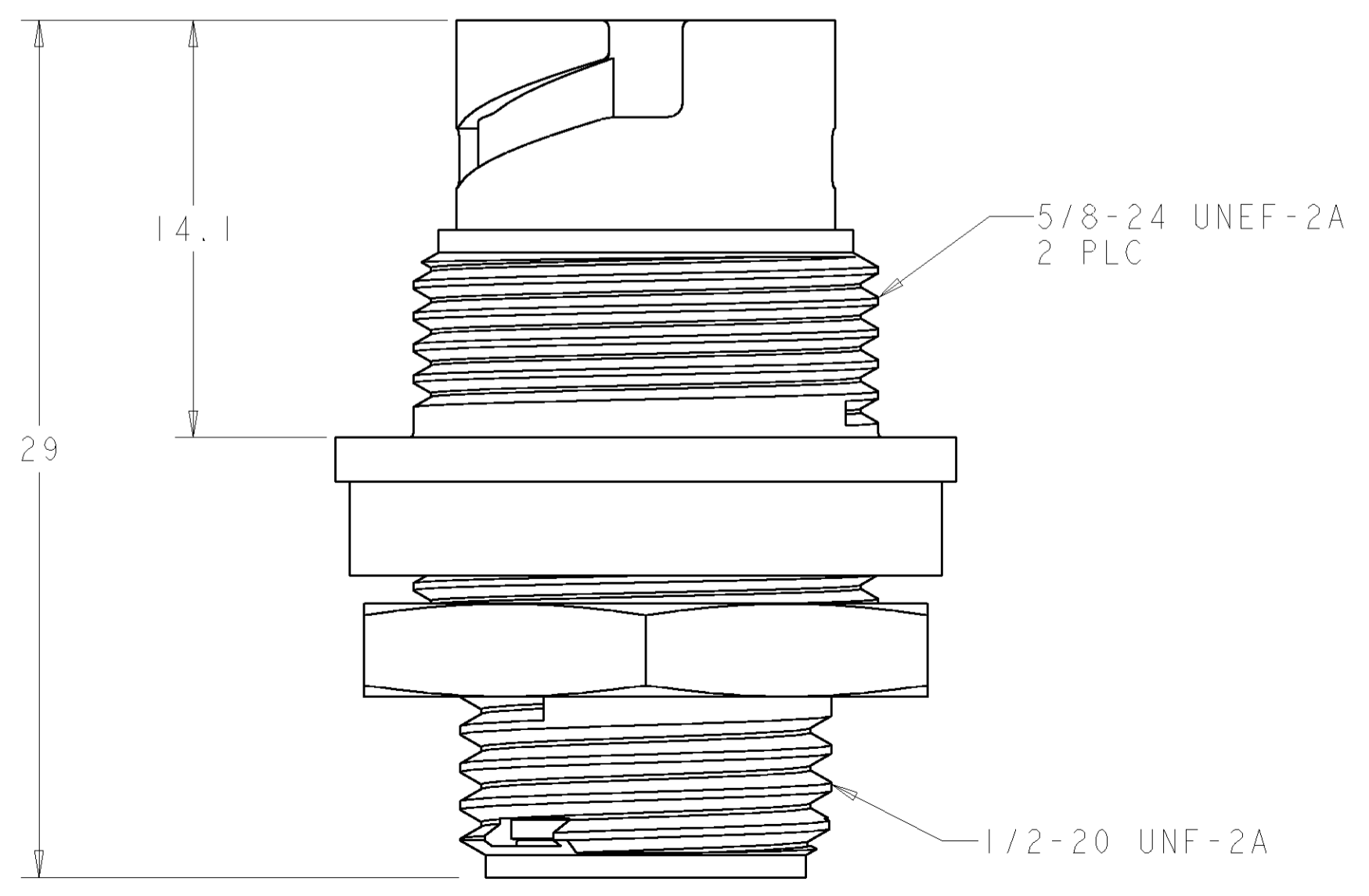
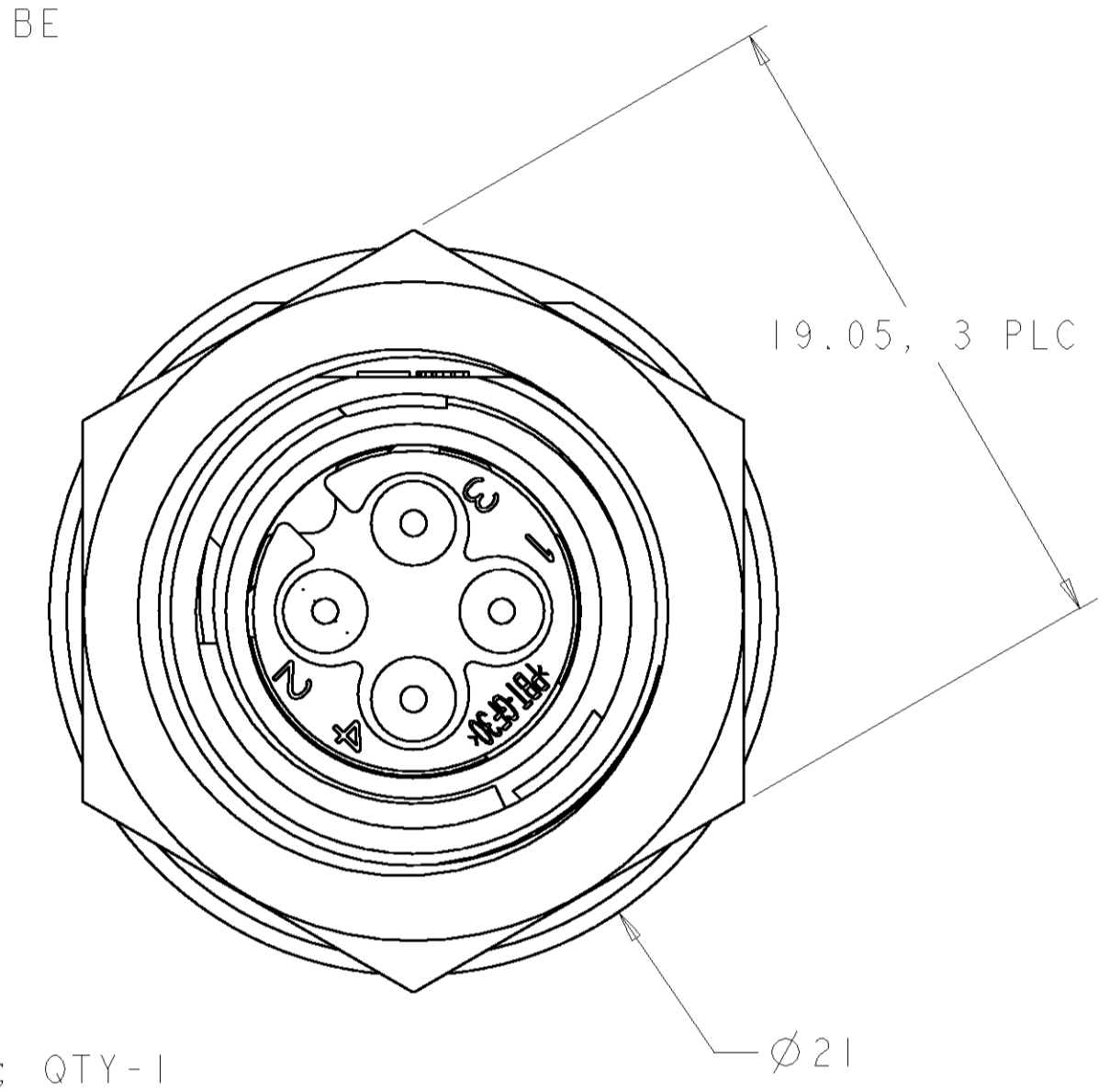
SEAL, PERIPHERAL; QTY-1  
 MATERIAL: ELASTOMER, COLOR-GRAY

SECTION Z-Z

PLATE, SEAL RETENTION; QTY-1  
 MATERIAL: THERMOPLASTIC, COLOR-BLACK

SEAL, WIRE ENTRY; QTY-1  
 MATERIAL: ELASTOMER, COLOR-SEE TABLE

NUT, JAM; SHOWN FOR REFERENCE ONLY, TO BE ORDERED SEPARATELY, PART # 1604196-1



SUGGESTED PANEL CUTOUT

1. CONNECTOR CAN BE FRONT OR REAR PANEL MOUNTED.  
 △ MAX PANEL THICKNESS - 3.18.

## QUALIFICATION TEST PENDING

YELLOW	Ø0.75	130°	1445421-04
NATURAL	Ø1.5	115°	1445421-03
NATURAL	Ø1.5	130°	1445421-02
YELLOW	Ø0.75	115°	1445421-01
SEAL, WIRE ENTRY COLOR	ØX REF	K REF	PART NUMBER

DIMENSIONS: mm 		TOLERANCES UNLESS OTHERWISE SPECIFIED: 0 PLC ± 1 PLC ±0.13 2 PLC ± 3 PLC ± 4 PLC ± ANGLES ± FINISH -		DWN G. DOUTY 07MAR2001 ENR H. WAKEEM 12JUN2003 APVD H. WAKEEM 12JUN2003		<b>tyco</b> <b>Electronics</b> Tyco Electronics Harrisburg, PA 17105-3608	
MATERIAL SEE CALLOUT		WEIGHT -		SIZE CAGE CODE DRAWING NO A1 00779 C=1445421		RESTRICTED TO -	
CUSTOMER DRAWING				SCALE 5:1		SHEET 1 OF 1 REV B	